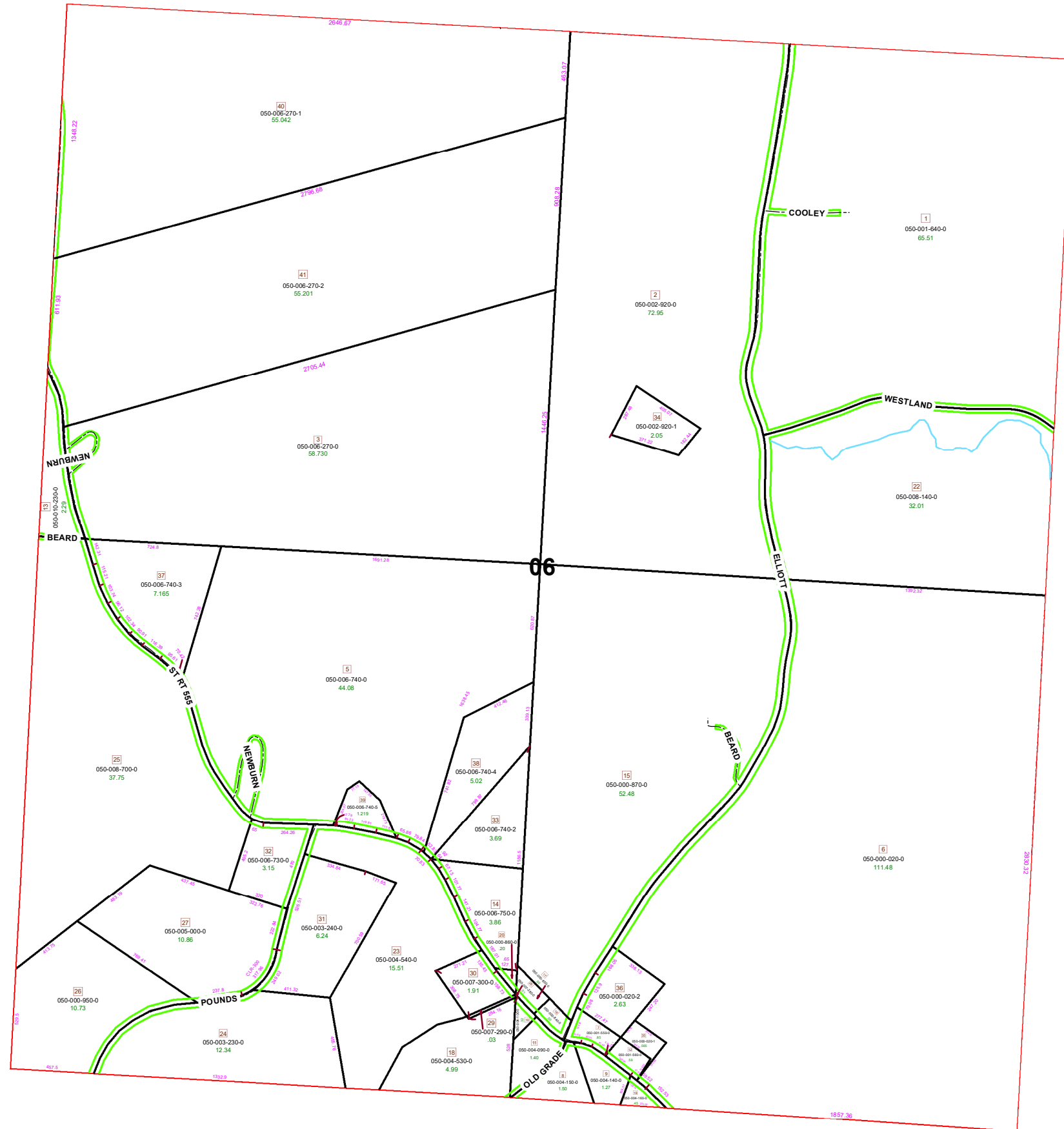
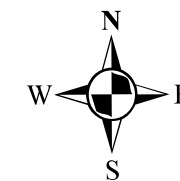


HOMER TOWNSHIP SECTION 6 R13 TWP 7 MORGAN COUNTY, OH

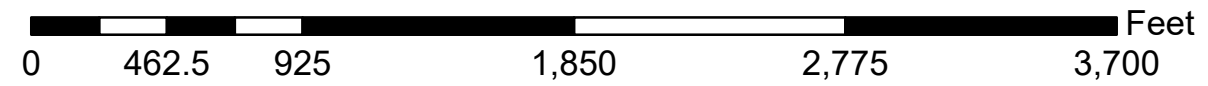


PIN	VOL	PAGE	Owner	LegalDescr	Acres
050-003-230-0	D.V 186	786	BATTLE BILLY & SANDRA K	R13 T07 S06 SD 24	12.34
050-003-240-0	D.V 186	786	BATTLE BILLY & SANDRA K	R13 T07 S06 SD 31	6.24
050-001-560-0	OR231	4855	BROWN JEREMIAH A	R13 T07 S06 SD 12	0.591
050-000-020-1	OR231	4855	BROWN JEREMIAH A	R13 T07 S06 SD 35 SURVIVO	0.565
050-006-270-1	OR231	3352	BRUNER LAND COMPANY INC	R13 T7 S6 SD40	55.042
050-006-270-0	OR231	3252	BRUNER LAND COMPANY INC	R13 T07 S06 SD 3	58.73
050-006-270-2	OR231	3252	BRUNER LAND COMPANY INC	R13 T7 S6 SD41	55.201
050-000-950-0	OR191	963	CHESTER JEREMY D & MELISSA J	R13 T07 S06 SD 26 SURVIVO	10.73
050-002-920-0	D.V 180	802	FISHER LINDA M	R13 T07 S06 SD 2	72.95
050-006-740-3	OR231	1444	GRILLIOT THOMAS N & ANN E REV TRUST	R13 T07 S06 SD 37	7.165
050-005-000-0	OR223	3180	HAY GREGORY S	R13 T07 S06 SD 27	10.86
050-004-090-0	D.V 178	27	JONES KEITH & CATHIL	R13 T07 S06 SD 11	1.4
050-004-100-0	D.V 178	27	JONES KEITH & CATHIL	R13 T07 S06 SD 10	0.317
050-006-740-5	OR200	523	KING DUANE E	R13 T07 S06 SD 39	1.219
050-001-550-0	OR139	315	KIRKBRIDE LEWIS C & CHERYL D	R13 T07 S06 SD 07 SURVIVO	0.849
050-000-020-2	OR139	315	KIRKBRIDE LEWIS C & CHERYL D	R13 T07 S06 SD 36 SURVIVO	2.633
050-006-740-4	OR228	3370	MONTGOMERY SHANE C & KATHLEEN J	R13 T07 S06 SD 38 SURVIVO	5.023
050-002-920-1	OR232	3321	NAPIER GARY & TERESA A	R13 T07 S06 SD 34 SURVIVO	2.05
050-006-730-0	D.V 162	544	NEWBURN JAMES A & LINDA	R13 T07 S06 SD 32	3.15
050-006-740-0	OR72	214	NEWBURN WILLIAM HAROLD LEE & DEBOR	R13 T07 S06 SD 5 SURVIVOR	44.076
050-001-640-0	OR117	701	O'NAIL DEBORAH	R13 T07 S06 SD 1	65.51
050-007-290-0	OR51	47	PIERCE RAY T JR & CAROL	R13 T07 S06 SD 29	0.03
050-007-280-0	OR51	47	PIERCE RAY T JR & CAROL	R13 T07 S06 SD 28	0.003
050-007-300-0	OR51	47	PIERCE RAY T JR & CAROL	R13 T07 S06 SD 30	1.907
050-004-530-0	OR51	47	PIERCE RAY T JR & CAROL A	R13 T07 S06 SD 18 SURVIVO	4.99
050-004-540-0	OR51	47	PIERCE RAY T JR & CAROL A	R13 T07 S06 SD 23 SURVIVO	15.513
050-008-140-0	OR123	734	SCOLES MICHAEL L ETAL	R13 T07 S06 SD 22	32.01
050-000-020-0	OR229	2264	SHUSTER STEPHEN A & KIMBERLY S	R13 T07 S06 SD 06 SURVIVO	111.485
050-008-700-0	OR204	2872	SPIRES DORIS A TRUSTEE	R13 T07 S06 SD 25	37.75
050-004-160-0	OR233	5045	STRODE AUSTIN H	R13 T07 S06 SD 19	0.45
050-004-140-0	OR216	1982	STRODE STANLEY H & CATHERINE	R13 T07 S06 SD 9	1.27
050-004-150-0	OR216	1982	STRODE STANLEY H & CATHERINE	R13 T07 S06 SD 8	1.5
050-000-870-0	OR228	3212	WELCH DUSTIN A	R13 T07 S06 SD 15	52.48
050-000-840-0	OR224	1466	WELCH JACK & CAROL	R13 T07 S06 SD 16	0.5
050-000-860-0	OR224	1466	WELCH JACK & CAROL	R13 T07 S06 SD 20	0.2
050-000-850-0	OR224	1466	WELCH JACK & CAROL	R13 T07 S06 SD 17	0.5
050-006-750-0	OR224	1466	WELCH JACK & CAROL	R13 T07 S06 SD 14	3.86
050-006-740-2	OR224	1466	WELCH JACK & CAROL	R13 T07 S06 SD 33	3.687
050-010-230-0	OR215	1157	WYNSTRA ALEX MICHAEL SR	R13 T07 S06 SD 13	2.29



Boundaries

- Hidden
- Hydro
- Roads
- County
- Lot
- Parcel
- ROW
- Section
- Township
- Parcels



Disclaimer: The information that these maps contains is for reference purposes only. Please bring any errors to the attention of the Engineer's Office staff.
Thank you

Source: Morgan County Engineer's Office
Author: Marcia Wolfe
Date: 6/5/2020